

Illicit trade studies: An example from Mexico



JOHNS HOPKINS
BLOOMBERG SCHOOL
of PUBLIC HEALTH

Institute for
Global Tobacco Control

Kevin Welding, PhD

Associate Director

Institute for Global Tobacco Control

Johns Hopkins Bloomberg School of Public Health

Acknowledgements

Research team: Belén Saenz-de-Miera, Luz Myriam Reynales, Ignacio Mendez, René Santos, Graziele Grilo, Kevin Welding

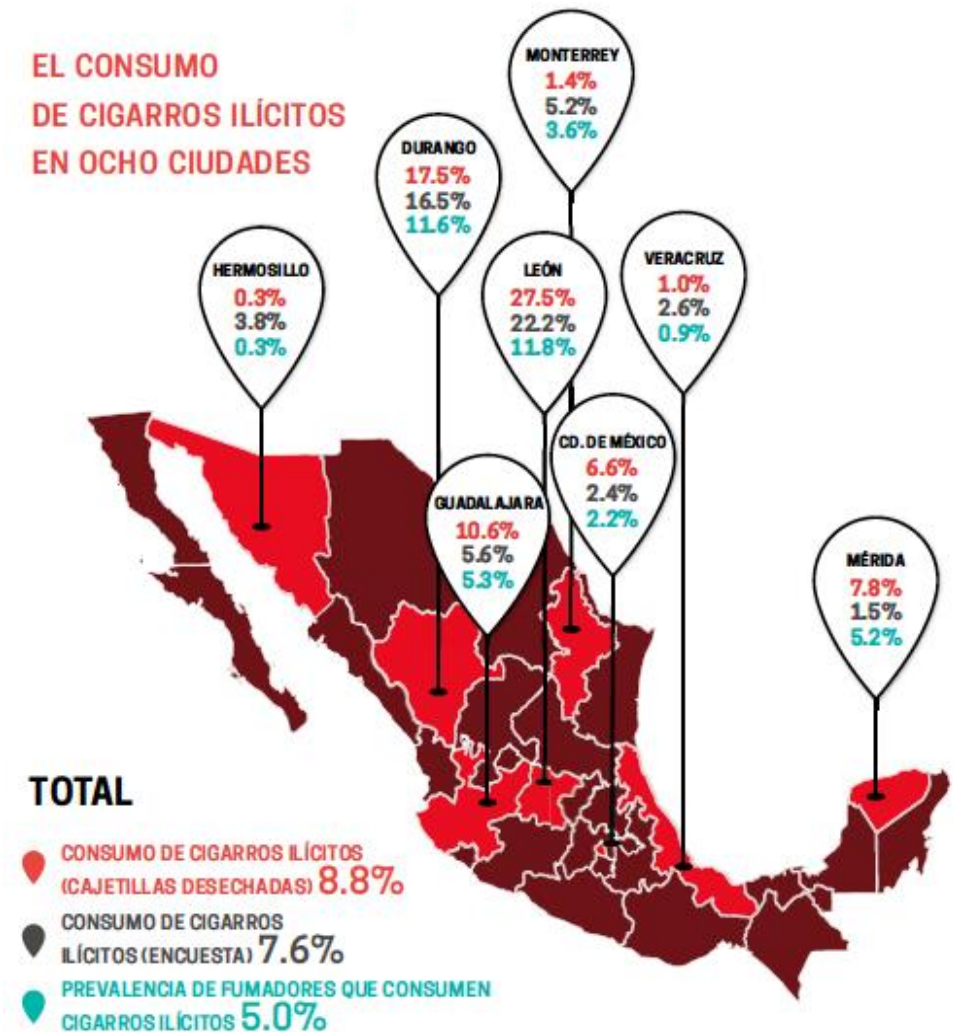
Work team: Government agencies, field supervisors, field teams, and administrative and logistical support

Funder: This study was supported by a grant from the Institute for Global Tobacco Control at the Johns Hopkins Bloomberg School of Public Health with funding from the Bloomberg Initiative to Reduce Tobacco Use to the National Institute of Public Health (INSP) in Mexico.



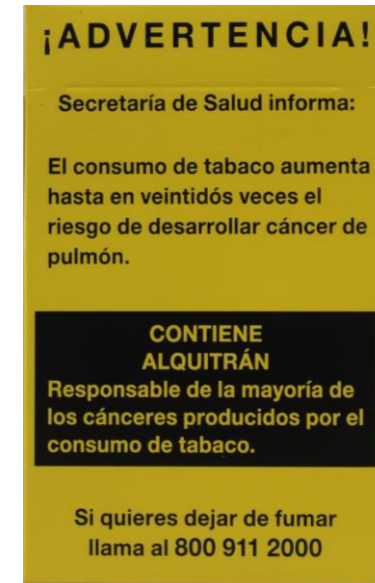
Previous Study (2017)

- **Motivation:** industry estimate of 16.6%
- **Methods:** discarded packs and consumer survey; 8 cities (Hermosillo, Durango, León, Guadalajara, Monterrey, CDMX, Veracruz, Mérida)
- **Results:** from discarded packs: 8.8%
from consumer survey: 7.6%
- **Discussion:** wide geographical variance; suggests that tax/price is not the main determinant.
- **Citation:** Saenz de Miera Juarez B, Reynales-Shigematsu LM, Stoklosa M, Welding K, Drope J. Measuring the illicit cigarette market in Mexico: a cross validation of two methodologies. Tobacco Control 2021;30:125-131.



Definitions of legality

- Definitions of legality by method
- **Discarded packs:**
 - Compliance with 3 regulations that determine the appearance of packs (details to come)
- **Survey of people who smoke:**
 - Brand analysis



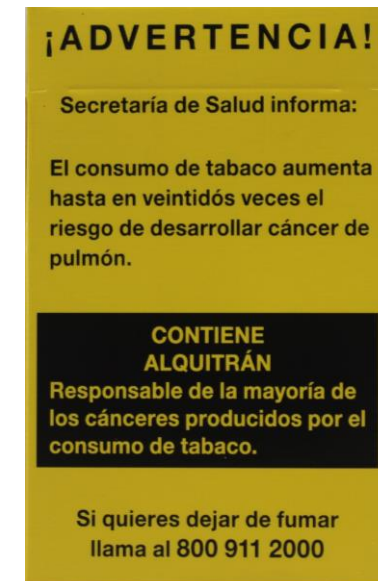
Follow-up Study (2022-23)

- **Motivation:** industry groups accepted previous results, but current situation much worse
- **Location:** same 8 cities (Hermosillo, Durango, León, Guadalajara, Monterrey, CDMX, Veracruz, Mérida) + 3 new cities (La Paz, Puebla, Toluca)
- **Methods:** discarded packs (12,607 of them)
- **Results:** coming out in 2 weeks in Mexico City
- **Context:** Smoking prevalence remains stagnant; taxes were only adjusted for inflation during this period; customs enforcement taken over by the military



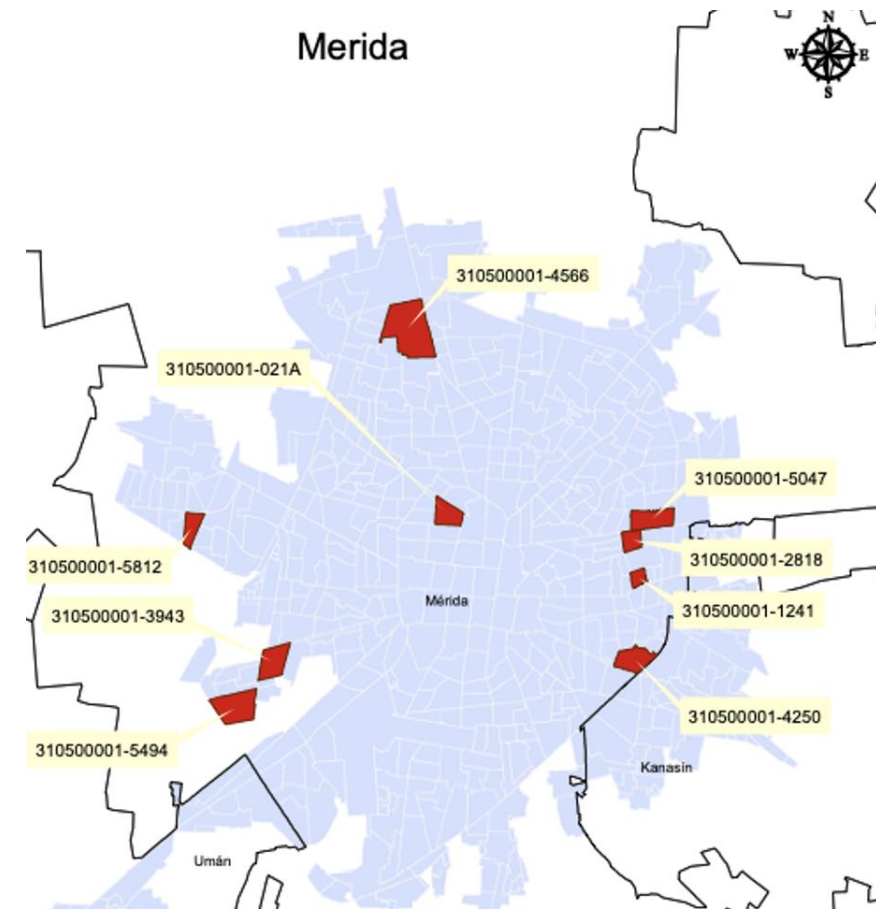
Identifying illicit packs

- Compliance with 3 regulations that determine the appearance of packs (first study)
 - pictogram on the front face that occupies 30%
 - text health warning on the back face that occupies 100%
 - text "Para venta exclusiva en México"
- Brand analysis
 - Legal brand list from:
Miscellaneous Tax Resolution (RMF)
- Presence of the security code
 - Law of the Special Tax on Production and Services (LIEPS) and RMF rules



Sampling

- **Pilot:** estimated 100 discarded packs every 12.36km of road
- **Power calculation:** 670 discarded packs per city -> 82.8 kilometers required
- **Routes:** those traveled correspond to major roads in a set of well-defined areas (Basic Geostatistical Area, AGEB)
- **Method:** two-stage probability sampling to select the AGEBs
- **Considerations:** street cleaning schedules, tourist areas
- **Adjustments:** convenience sampling within a capitol or major city could also result in useful information



Strengths and Limitations

- **Limitation 1:** discarded pack collection estimate could be an over-estimate of the issue
- **Limitation 2:** Need to have some way to identify illicit: health warning labels, required statement, tax stamp, brands
- **Limitation 3:** initial sampling of routes can require expertise
- **Strength 1:** It is relatively inexpensive to conduct with an even lower marginal cost in follow-ups
- **Strength 2:** It can be conducted relatively quickly; does not rely on sampling consumers
- **Strength 3:** It doesn't require a lot of pre-existing (high quality) data unlike gap analyses



Discussion

- If you can do more than one method, do it.
- If you have high quality data, use it.
- If you have unlimited resources, do an extensive survey of consumers.
- If you have to choose one method; don't have high quality data; don't have unlimited time and money...
 - Consider discarded pack collections to estimate illicit market size



Illicit trade studies: An example from Mexico



JOHNS HOPKINS
BLOOMBERG SCHOOL
of PUBLIC HEALTH

**Institute for
Global Tobacco Control**

Kevin Welding, PhD
kwelding@jhu.edu